

horexkal



# TOWER

---

**ALR** ALR 977 - ALR 1290 - ALR 1915

---

**ALRN** ALRN 977 - ALRN 1290 - ALRN 1915

---

**ALRS** ALRS 655 - ALRS 977 - ALRS 1290

---

**ALAS** ALAS 655 - ALAS 977 - ALAS 1290

---

**ALA** ALA 977 - ALA 1290 - ALA 1915

---

**ALAL** ALAL 977 - ALAL 1290 - ALAL 1915

---



# Tablas / Chart / Table / Tabellen

		AIG <b>D</b>						AIG <b>F</b>											
<b>TOWER</b>		<b>ALR</b>			<b>ALRN</b>			<b>ALRS</b>			<b>ALAS</b>			<b>ALA</b>			<b>ALAL</b>		
MODELO/ MODEL/ MODÈLE / MODELL		ALR 977	ALR 1290	ALR 1915	ALRN 977	ALRN 1290	ALRN 1915	ALRS 655	ALRS 977	ALRS 1290	ALAS 655	ALAS 977	ALRS 1290	ALA 977	ALA 1290	ALA 1915	ALAL 977	ALAL 1290	ALAL 1915
<b>Superficie exp.</b> Surface exp. Surface exp. Präsentationsfläche	m2	1,17	2,21	3,15	1,17	2,21	3,18	0,81	1,16	1,62	1,04	1,68	2,51	1,2	1,62	2,4	1,2	1,62	2,4
<b>Pot. frigorífica</b> Refrigeration power Puis frigorifique Kälteleistung	(-10°C/+45°C) W	550	875	1250	/			780	1340	1900	780	1340	1900	550	875	1250	550	875	1250
<b>Pot. eléctrica</b> Electrical power Pot electricque Elektrische Energie	W	679	1045	1358	9	14	21	780	1340	1900	780	1340	1900	1192	1526	1970	1192	1526	1970
<b>Temp. producto</b> Product temp. Temp. produit Produkt-Temp.	°C	1 / +10°C			N			+65°C			+65°C			1 / +10°C			1 / +10°C		
<b>Peso/ Weight/ Poids / Gewicht</b>	Kg	130	190	260	108	156	248	115	150	190	115	150	190	200	223	310	200	223	310
<b>Dim. C/emb. (LxPxA)</b> Dim With packaging (WxHxD)	mm	1000 x 1000 x 1401	1300 x 1000 x 1401	2000 x 1000 x 1401	1000 x 1000 x 1401	1300 x 1000 x 1401	2000 x 1000 x 1401	725 x 1000 x 1401	1000 x 1000 x 1401	1300 x 1000 x 1401	725 x 1000 x 1401	1000 x 1000 x 1401	1300 x 1000 x 1401	1000 x 1000 x 1401	1300 x 1000 x 1401	2000 x 1000 x 1401	1000 x 1000 x 1401	1300 x 1000 x 1401	2000 x 1000 x 1401

## Características / Features / Caractéristiques Eigenschaften



















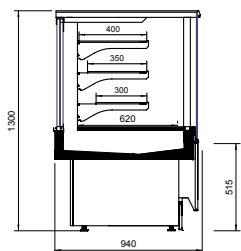




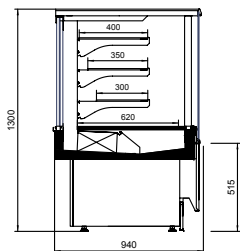
● Optional

Best energy class model. More information at EPREL or contact our Sales Department.

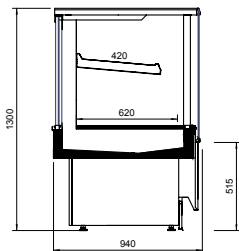
# Secciones / Sections / Sections / Abschnitte



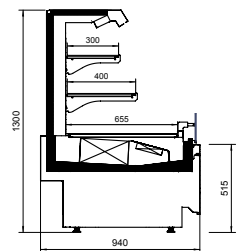
**ALRN**



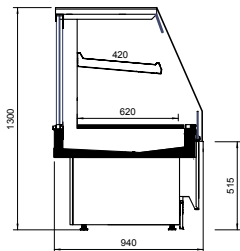
**ALR**



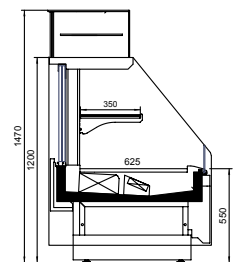
**ALRS**



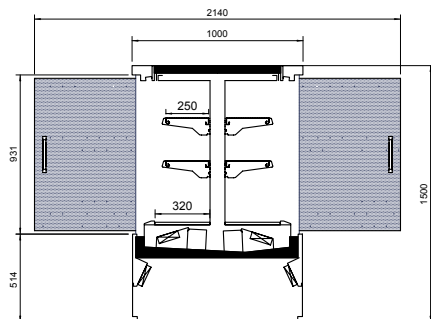
**ALA**



**ALAS**



**ALAL MIX**



**IQBIC-L**



# TOWER

---

